

Technical data

Trapezoidal screws and ball screws

Trapezoidal screws

		MULI 1	MULI 2	MULI 3	MULI 4	MULI 5	JUMBO 1	JUMBO 2	JUMBO 3	JUMBO 4	JUMBO 5
Maximum lifting capacity [kN] ²⁾		5	10	25	50	100	150	200	250	350	500
Maximum lifting capacity [tons]		0.6	1.1	2.8	5.6	11.2	16.8	22.4	28.0	39.2	56.0
Screw diameter and pitch [mm]		18 x 4	20 x 4	30 x 6	40 x 7	55 x 9	60 x 9	70 x 10	80 x 10	100 x 10	120 x 14
Stroke in mm per full turn of the worm shaft	Ratio H ¹⁾	1	1	1	1	1	1	1	1	1	1
	Ratio L ¹⁾	0.25	0.25	0.25	0.25	0.25	0.25	0.25	0.25	0.25	0.25
Gear ratio	Ratio H ¹⁾	4:1	4:1	6:1	7:1	9:1	9:1	10:1	10:1	10:1	14:1
	Ratio L ¹⁾	16:1	16:1	24:1	28:1	36:1	36:1	40:1	40:1	40:1	56:1
Efficiency [%] ³⁾	Ratio H ¹⁾	31	29	29	26	24	23	22	20	19	19
	Ratio L ¹⁾	25	23	23	21	19	18	17	15	15	15
Weight [kg] (zero stroke)		1.2	2.1	6.0	17.0	32.0	41.0	57.0	57.0	85.0	160.0
Weight [kg per 100 mm stroke]		0.26	0.42	1.14	1.67	3.04	3.1	4.45	6.13	7.9	11.5
Idling torque [Nm]	H	0.04	0.11	0.15	0.35	0.84	0.88	1.28	1.32	1.62	1.98
	L	0.03	0.10	0.12	0.25	0.51	0.57	0.92	0.97	1.10	1.42

Ball screws

		MULI 1	MULI 2	MULI 3	MULI 4	MULI 5	JUMBO 3
Maximum lifting capacity [kN] ²⁾		5	10	12.5	22	42	78
Maximum lifting capacity [tons]		0.6	1.1	1.4	2.5	4.7	8.7
Screw diameter and pitch [mm]		1605	2005	2505	4005	4010	5010
Stroke in mm per full turn of the worm shaft	Ratio H ¹⁾	1.25	1.25	0.83	0.71	1.43	1
	Ratio L ¹⁾	0.31	0.31	0.21	0.18	0.36	0.25
Gear ratio	Ratio H ¹⁾	4:1	4:1	6:1		7:1	9:1
	Ratio L ¹⁾	16:1	16:1	24:1		28:1	36:1
Efficiency [%] ³⁾	Ratio H ¹⁾	57	56	55	53	56	47
	Ratio L ¹⁾	46	44	43	43	45	37
Weight [kg] (zero stroke)		1.3	2.3	7.0	19.0	35.0	63.0
Weight [kg per 100 mm stroke]		0.26	0.42	1.14	1.37	3.04	6.13
Idling torque [Nm]	H	0.04	0.11	0.15	0.35	0.84	1.32
	L	0.03	0.10	0.12	0.25	0.51	0.97

1) H = High speed, L = Low speed

2) Depending on speed of travel, operating hours, etc.

3) The specified efficiencies are average values

Performance tables for MULI® worm gear screw jacks

MULI® 1 – MULI® 5 with gear ratio H and L, with single-start trapezoidal screw and 20% duty cycle per hour at a normal temperature of 20° C (68 °F).

The screw jacks can overheat or have an excessive area pressure develop in the screw thread at the speeds stated in the shaded fields. Precision Technology USA, Inc. cannot assume any liability for this range.

MULI® 1 – screw Tr 18 x 4 Lifting force (kN)

Speed [rpm]	Lifting speed [mm/min]		5		4		3		2		1.5		1													
	H	L	H	L	H	L	H	L	H	L	H	L	H	L												
1500	1500	375	2.61	0.41	0.83	0.13	2.09	0.33	0.67	0.10	1.58	0.25	0.51	0.08	1.07	0.17	0.35	0.05	0.81	0.13	0.27	0.04	0.55	0.09	0.19	0.03
1000	1000	250	2.61	0.27	0.83	0.09	2.09	0.22	0.67	0.07	1.58	0.17	0.51	0.05	1.07	0.11	0.35	0.04	0.81	0.08	0.27	0.03	0.55	0.06	0.19	0.02
750	750	187	2.61	0.20	0.83	0.06	2.09	0.16	0.67	0.05	1.58	0.12	0.51	0.04	1.07	0.08	0.35	0.03	0.81	0.06	0.27	0.02	0.55	0.04	0.19	0.01
500	500	125	2.61	0.14	0.83	0.04	2.09	0.11	0.67	0.03	1.58	0.08	0.51	0.03	1.07	0.06	0.35	0.02	0.81	0.04	0.27	0.01	0.55	0.03	0.19	0.01

MULI® 2 – screw Tr 20 x 4 Lifting force (kN)

Speed [rpm]	Lifting speed [mm/min]		10		7.5		5		4		3		2													
	H	L	H	L	H	L	H	L	H	L	H	L	H	L												
1500	1500	375	5.60	0.88	1.83	0.29	4.23	0.66	1.40	0.22	2.86	0.45	0.97	0.15	2.31	0.36	0.79	0.12	1.76	0.28	0.62	0.10	1.21	0.19	0.45	0.07
1000	1000	250	5.60	0.59	1.83	0.19	4.23	0.44	1.40	0.15	2.86	0.30	0.97	0.10	2.31	0.24	0.79	0.08	1.76	0.18	0.62	0.06	1.21	0.13	0.45	0.05
750	750	187	5.60	0.44	1.83	0.14	4.23	0.33	1.40	0.11	2.86	0.22	0.97	0.08	2.31	0.18	0.79	0.06	1.76	0.14	0.62	0.05	1.21	0.09	0.45	0.04
500	500	125	5.60	0.29	1.83	0.10	4.23	0.22	1.40	0.07	2.86	0.15	0.97	0.05	2.31	0.12	0.79	0.04	1.76	0.09	0.62	0.03	1.21	0.06	0.45	0.02

MULI® 3 – screw Tr 30 x 6 Lifting force (kN)

Speed [rpm]	Lifting speed [mm/min]		25		20		15		10		5		2.5													
	H	L	H	L	H	L	H	L	H	L	H	L	H	L												
1500	1500	375	13.88	2.18	4.45	0.70	11.13	1.75	3.58	0.56	8.39	1.32	2.72	0.43	5.64	0.89	1.85	0.29	2.90	0.45	0.99	0.15	1.52	0.24	0.55	0.09
1000	1000	250	13.88	1.45	4.45	0.47	11.13	1.17	3.58	0.38	8.39	0.88	2.72	0.28	5.64	0.59	1.85	0.19	2.90	0.30	0.99	0.10	1.52	0.16	0.55	0.06
750	750	187	13.88	1.09	4.45	0.35	11.13	0.87	3.58	0.28	8.39	0.66	2.72	0.21	5.64	0.44	1.85	0.15	2.90	0.23	0.99	0.08	1.52	0.12	0.55	0.04
500	500	125	13.88	0.73	4.45	0.23	11.13	0.58	3.58	0.19	8.39	0.44	2.72	0.14	5.64	0.30	1.85	0.10	2.90	0.15	0.99	0.05	1.52	0.08	0.55	0.03

MULI® 4 – screw Tr 40 x 7 Lifting force (kN)

Speed [rpm]	Lifting speed [mm/min]		50		40		30		20		10		5													
	H	L	H	L	H	L	H	L	H	L	H	L	H	L												
1500	1500	375	30.97	4.86	9.73	1.53	24.85	3.90	7.83	1.23	18.72	2.94	5.94	0.93	12.60	1.98	4.04	0.63	6.47	1.02	2.15	0.34	3.41	0.54	1.20	0.19
1000	1000	250	30.97	3.24	9.73	1.03	24.85	2.60	7.83	0.82	18.72	1.96	5.94	0.62	12.60	1.32	4.04	0.42	6.47	0.68	2.15	0.22	3.41	0.36	1.20	0.13
750	750	187	30.97	2.43	9.73	0.76	24.85	1.95	7.83	0.62	18.72	1.47	5.94	0.47	12.60	0.99	4.04	0.32	6.47	0.51	2.15	0.17	3.41	0.27	1.20	0.09
500	500	125	30.97	1.62	9.73	0.51	24.85	1.30	7.83	0.41	18.72	0.98	5.94	0.31	12.60	0.66	4.04	0.21	6.47	0.34	2.15	0.11	3.41	0.18	1.20	0.06

MULI® 5 – screw Tr 55 x 9 Lifting force (kN)

Speed [rpm]	Lifting speed [mm/min]		100		80		60		40		20		10													
	H	L	H	L	H	L	H	L	H	L	H	L	H	L												
1500	1500	375	67.19	10.55	21.46	3.37	53.92	8.47	7.27	2.71	40.65	6.38	13.08	2.05	27.38	4.30	8.89	1.40	14.11	2.22	4.70	0.74	7.47	1.17	2.61	0.41
1000	1000	250	67.19	7.04	21.46	2.25	53.92	5.65	7.27	1.81	40.65	4.26	13.08	1.37	27.38	2.87	8.89	0.93	14.11	1.48	4.70	0.49	7.47	0.78	2.61	0.27
750	750	187	67.19	5.28	21.46	1.69	53.92	4.23	7.27	1.36	40.65	3.19	13.08	1.03	27.38	2.15	8.89	0.70	14.11	1.11	4.70	0.37	7.47	0.59	2.61	0.20
500	500	125	67.19	3.52	21.46	1.12	53.92	2.82	7.27	0.90	40.65	2.13	13.08	0.68	27.38	1.43	8.89	0.47	14.11	0.74	4.70	0.25	7.47	0.39	2.61	0.14

Performance tables for JUMBO® worm gear screw jacks

JUMBO® 1 – JUMBO® 5 with gear ratio H and L, with single-start trapezoidal screw and 20% duty cycle per hour at a normal temperature of 20° C (68 °F).

The screw jacks can overheat or have an excessive area pressure develop in the screw thread at the speeds stated in the shaded fields. Precision Technology USA, Inc. cannot assume any liability for this range.

JUMBO® 1 – screw Tr 60 x 9 Lifting force (kN)

Speed [rpm]	Lifting speed [mm/min]		150		100		80		60		40		20													
	H	L	[Nm] [kW]	[Nm] [kW]	[Nm] [kW]	[Nm] [kW]	[Nm] [kW]	[Nm] [kW]	[Nm] [kW]	[Nm] [kW]	[Nm] [kW]	[Nm] [kW]	[Nm] [kW]	[Nm] [kW]												
1500	1500	375	104.73	16.45	33.74	5.30	70.11	11.01	22.69	3.56	56.27	8.84	18.26	2.87	42.42	6.66	13.84	2.17	28.57	4.49	9.42	1.48	14.73	2.31	4.99	0.78
1000	1000	250	104.73	10.97	33.74	3.53	70.11	7.34	22.69	2.38	56.27	5.89	18.26	1.91	42.42	4.44	13.84	1.45	28.57	2.29	9.42	0.99	14.73	1.54	4.99	0.52
750	750	187	104.73	8.22	33.74	2.65	70.11	5.51	22.69	1.78	56.27	4.42	18.26	1.43	42.42	3.33	13.84	1.09	28.57	2.24	9.42	0.74	14.73	1.16	4.99	0.39
500	500	125	104.73	5.48	33.74	1.77	70.11	3.67	22.69	1.19	56.27	2.95	18.26	0.96	42.42	2.22	13.84	0.72	28.57	1.50	9.42	0.49	14.73	0.77	4.99	0.26

JUMBO® 2 – screw Tr 70 x 10 Lifting force (kN)

Speed [rpm]	Lifting speed [mm/min]		200		170		130		100		75		50													
	H	L	[Nm] [kW]	[Nm] [kW]	[Nm] [kW]	[Nm] [kW]	[Nm] [kW]	[Nm] [kW]	[Nm] [kW]	[Nm] [kW]	[Nm] [kW]	[Nm] [kW]	[Nm] [kW]	[Nm] [kW]												
1500	1500	375	146.04	22.94	47.75	7.50	124.33	19.53	40.73	6.40	95.37	14.98	31.36	4.93	73.66	11.57	24.34	3.82	55.56	8.73	18.48	2.90	30.47	5.89	12.63	1.98
1000	1000	250	146.04	15.29	47.75	5.00	124.33	13.02	40.73	4.26	95.37	9.99	31.36	3.28	73.66	7.71	24.34	2.55	55.56	5.82	18.48	1.94	30.47	3.92	12.63	1.32
750	750	187	146.04	11.47	47.75	3.75	124.33	9.76	40.73	3.20	95.37	7.49	31.36	2.46	73.66	5.78	24.34	1.91	55.56	4.36	18.48	1.45	30.47	2.94	12.63	0.99
500	500	125	146.04	7.65	47.75	2.50	124.33	6.31	40.73	2.13	95.37	4.99	31.36	1.64	73.66	3.86	24.34	1.27	55.56	2.91	18.48	0.97	30.47	1.96	12.63	0.66

JUMBO® 3 – screw Tr 80 x 10 Lifting force (kN)

Speed [rpm]	Lifting speed [mm/min]		250		200		160		130		100		75													
	H	L	[Nm] [kW]	[Nm] [kW]	[Nm] [kW]	[Nm] [kW]	[Nm] [kW]	[Nm] [kW]	[Nm] [kW]	[Nm] [kW]	[Nm] [kW]	[Nm] [kW]	[Nm] [kW]	[Nm] [kW]												
1500	1500	375	200.00	31.47	67.32	10.57	160.56	25.22	54.05	8.49	128.71	20.22	43.43	6.82	104.82	16.46	35.47	5.37	80.94	12.71	27.51	4.32	61.03	9.59	20.87	3.28
1000	1000	250	200.00	20.98	67.32	7.05	160.56	16.81	54.05	5.66	128.71	13.48	43.43	4.55	104.82	10.98	35.47	3.71	80.94	8.48	27.51	2.88	61.03	6.39	20.87	2.19
750	750	187	200.00	15.74	67.32	5.29	160.56	12.61	54.05	4.24	128.71	10.11	43.43	3.41	104.82	8.23	35.47	2.79	80.94	6.36	27.51	2.16	61.03	4.79	20.87	1.64
500	500	125	200.00	10.49	67.32	3.52	160.56	8.41	54.05	2.83	128.71	6.74	43.43	2.27	104.82	5.49	35.47	1.86	80.94	4.24	27.51	1.44	61.03	3.20	20.87	1.09

JUMBO® 4 – screw Tr 100 x 10 Lifting force (kN)

Speed [rpm]	Lifting speed [mm/min]		350		300		250		200		150		100													
	H	L	[Nm] [kW]	[Nm] [kW]	[Nm] [kW]	[Nm] [kW]	[Nm] [kW]	[Nm] [kW]	[Nm] [kW]	[Nm] [kW]	[Nm] [kW]	[Nm] [kW]	[Nm] [kW]	[Nm] [kW]												
1500	1500	375	294.25	46.33	93.99	14.76	253.04	39.75	80.72	12.68	211.14	33.16	67.45	10.59	169.24	26.58	54.18	8.51	127.33	20.00	40.91	6.43	85.43	13.42	27.64	4.34
1000	1000	250	294.25	30.83	93.99	9.84	253.04	26.50	80.72	8.45	211.14	22.11	67.45	7.06	169.24	17.72	54.18	5.67	127.33	13.33	40.91	4.28	85.43	8.95	27.64	2.89
750	750	187	294.25	23.16	93.99	7.38	253.04	19.87	80.72	6.34	211.14	16.58	67.45	5.3	169.24	13.29	54.18	4.25	127.33	10.00	40.91	3.21	85.43	6.71	27.64	2.17
500	500	125	294.25	15.44	93.99	4.92	253.04	13.25	80.72	4.23	211.14	11.05	67.45	3.53	169.24	8.86	54.18	2.84	127.33	6.67	40.91	2.14	85.43	4.47	27.64	1.45

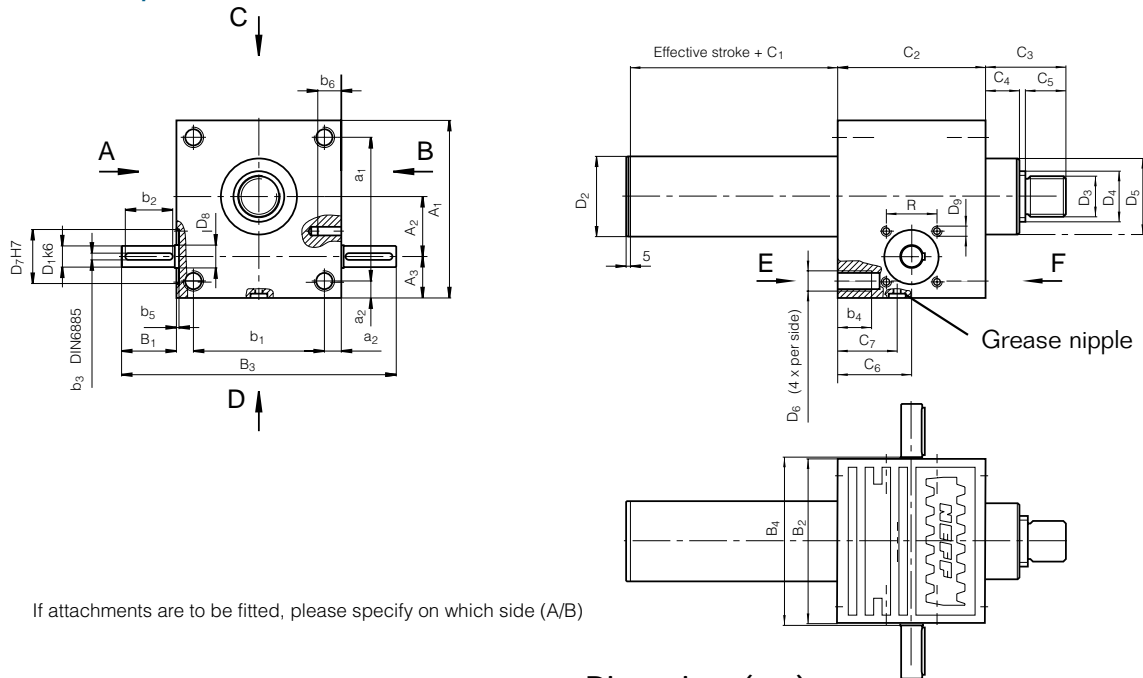
JUMBO® 5 – screw Tr 120 x 14 Lifting force (kN)

Speed [rpm]	Lifting speed [mm/min]		500		400		300		200		100		50													
	H	L	[Nm] [kW]	[Nm] [kW]	[Nm] [kW]	[Nm] [kW]	[Nm] [kW]	[Nm] [kW]	[Nm] [kW]	[Nm] [kW]	[Nm] [kW]	[Nm] [kW]	[Nm] [kW]	[Nm] [kW]												
1500	1500	375	421.02	66.13	134.12	21.07	337.21	52.97	107.58	16.90	253.40	39.80	81.04	12.73	169.60	26.64	54.50	8.56	85.79	13.47	27.69	4.39	43.88	6.89	14.69	2.31
1000	1000	250	421.02	44.09	134.12	14.04	337.21	35.31	107.58	11.26	253.40	26.53	81.04	8.49	169.60	17.76	54.50	5.71	85.79	8.98	27.69	2.93	43.88	4.60	14.69	1.54
750	750	187	421.02	33.06	134.12	10.53	337.21	26.48	107.58	8.45	253.40	19.90	81.04	6.36	169.60	13.32	54.50	4.28	85.79	6.74	27.69	2.20	43.88	3.45	14.69	1.15
500	500	125	421.02	22.04	134.12	7.02	337.21	17.66	107.58	5.63	253.40	13.27	81.04	4.24	169.60	8.88	54.50	2.85	85.79	4.49	27.69	1.46	43.88	2.30	14.69	0.77

Cubic Screw Jacks

Outline drawing and table of dimensions

Versions N, V



If attachments are to be fitted, please specify on which side (A/B)

Size

Dimensions (mm)

	A1 ⁵⁾ Metric	A2 Metric	A3 Metric	a1 Metric	a2 Metric	B1 Metric	B2 Metric	B3 Metric	B4 Metric	b1 Metric	b2 Metric	b3 Metric	b4 Metric	b5 Metric	C1 Metric	C2 Metric	C3 ¹⁾ Metric
MULI® 1	80	25	24	60	10	24	72	120	77	52	18	3	13	1.5	20	62	35(46)
MULI® 2	100	32	28	78	11	27.5	85	140	90	63	20	5	15	1.5	30	75	45(48.5)
MULI® 3	130	45	31	106	12	45	105	195	110	81	36	5	15	2	30	82	50
MULI® 4	180	63	39	150	15	47.5	145	240	150	115	36	6	16	2	45	117	65
MULI® 5	200	71	46	166	17	67.5	165	300	170	131	56	8	30	2.5	55	160	95
JUMBO® 1	210	71	49	170	20	65	195	325	200	155	56	8	40	8	55	175	95
JUMBO® 2	240	80	60	190	25	67.5	220	355	225	170	56	8	45	8	55	165	110
JUMBO® 3	240	80	60	190	25	67.5	220	355	225	170	56	8	45	8	55	165	110
JUMBO® 4	290	100	65	230	30	65	250	380	255	190	56	10	54	8	65	220	140
JUMBO® 5	360	135	75	290	35	100	300	500	305	230	90	14	80	8	90	266	200

Size

Dimensions (mm)

	C4 ²⁾ Metric	C5 Metric	C6 Metric	C7 Metric	D1k6 ⁴⁾ Metric	D2 ³⁾ Metric	D3 ⁶⁾ Metric	D4Tr Metric	D4KGT Metric	D5 ²⁾ Metric	D6 Metric	D7H7 Metric	D8 Metric	D9x6 ⁷⁾ Metric	R(TK) ⁷⁾ Metric	V-KGT Metric
MULI® 1	12(23)	19	31	22	10 X 21.5	33	M12 X 1.75	Tr18 x 4	1605	29.6(48)	M8	28	12	M5 x 10	32(45.25)	30 x 30
MULI® 2	18(21.5)	20	37.5	27	14 X 25	40	M14 X 2.0	Tr20 x 4	2005	38.7(61)	M8	35	15	M6 x 12	35(49.5)	40 x 40
MULI® 3	23	22	41	29	16 X 42.5	50	M20 X 2.5	Tr30 x 6	2505	46	M10	35	17	M8 x 12	44(62.2)	50 x 50
MULI® 4	32	29	58.5	42.5	20 X 45	60	M30 X 3.5	Tr40 x 7	4005/4010	60	M12	52	25	M10 x 15	55(77.8)	60 x 60
MULI® 5	40	48	80	53	25 X 65	82	M36 X 4	Tr55 x 9	5010	85	M20	52	28	M12 x 18	60(84.85)	80 x 80
JUMBO® 1	40	48	87.5	60	25 X 62.5	90	M48 X 2	Tr60 x 9	-	90	M24	52	28	M12 x 18	60(84.85)	-
JUMBO® 2	40	58	82.5	60	30 X 65	115	M56 X 2	Tr70 x 10	-	105	M30	58	32	M12 x 18	(80)	-
JUMBO® 3	40	58	82.5	60	30 X 65	115	M64 X 3	Tr80 x 10	8010	120	M30	58	32	M12 x 18	(80)	120 x 120
JUMBO® 4	50	78	110	86	35 X 62.5	133	M72 X 3	Tr100 x 10	-	145	M36	72	40	M16 x 30	(100)	-
JUMBO® 5	60	118	133	109	48 X 97.5	153	M100 X 3	Tr120 x 14	-	170	M42	80	50	M16 x 40	(115)	-

1) This dimension refers to the closed height and represents a minimum. It must be increased if bellows are used (see page 34).

2) The values in brackets refer to version with ball screw.

3) Square tube for version with ball screw and anti-rotation device.

4) Diameter and length to shoulder.

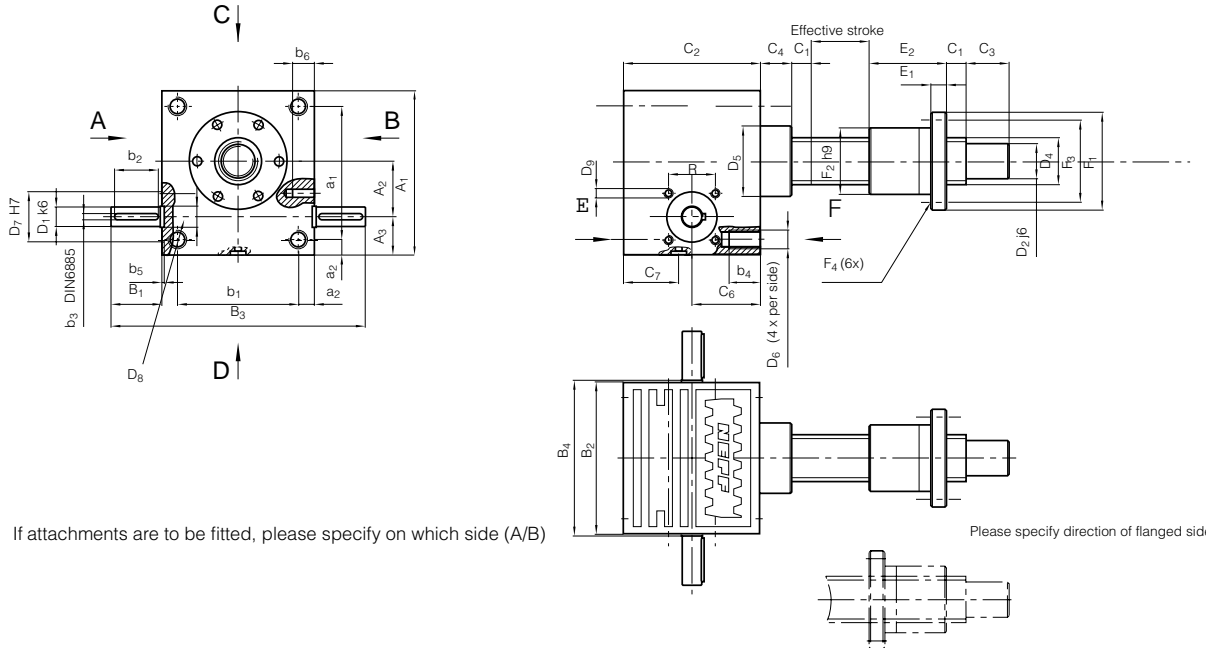
5) Dimension A1 in accordance to DIN 1685 GTB 18.

6) In accordance to DIN 13 screw thread: MULI®. In accordance to DIN 13 fine pitch thread: JUMBO®.

7) JUMBO® 2 – JUMBO® 5, only 3 holes are present.

Outline drawing and table of dimensions

Version R



If attachments are to be fitted, please specify on which side (A/B)

Please specify direction of flanged side

Size

Dimensions (mm)

	A ₁	A ₂	A ₃	a ₁	a ₂	B ₁	B ₂	B ₃	B ₄	b ₁	b ₂	b ₃	b ₄	b ₅	C ₁	C ₂	C ₃	C ₄	C ₆	C ₇	
	Metric	Metric	Metric	Metric	Metric	Metric	Metric	Metric	Metric	Metric	Metric	Metric	Metric	Metric	Metric	Metric	Metric	Metric	Metric	Metric	Metric
MULI® 1	80	25	24	60	10	24	72	120	77	52	18	3	13	1.5	12	62	15	12	31	22	
MULI® 2	100	32	28	78	11	27.5	85	140	90	63	20	5	15	1.5	15	75	20	18	37.5	27	
MULI® 3	130	45	31	106	12	45	105	195	110	81	36	5	15	2	20	82	25	23	41	29	
MULI® 4	180	63	39	150	15	47.5	145	240	150	115	36	6	16	2	25	117	30	32	58.5	42.5	
MULI® 5	200	71	46	166	17	67.5	165	300	170	131	56	8	30	2.5	25	160	45	40	80	53	
JUMBO® 1	210	71	49	170	20	65	195	325	200	155	56	8	40	8	25	175	55	40	87.5	60	
JUMBO® 2	240	80	60	190	25	67.5	220	355	225	170	56	8	45	8	25	165	70	40	82.5	60	
JUMBO® 3	240	80	60	190	25	67.5	220	355	225	170	56	8	45	8	25	165	75	40	82.5	60	
JUMBO® 4	290	100	65	230	30	65	250	380	255	190	56	10	54	8	25	220	100	50	110	86	
JUMBO® 5	360	135	75	290	35	100	300	500	305	230	90	14	80	8	30	266	120	60	133	109	

Size

Dimensions (mm)

	D ₁ k6 ³⁾	D ₂	D ₄ TR	D ₄ KGT	D ₅ ²⁾	D ₆	D ₇ H7	D ₈	D ₉ x b ₆	R(TK)	E ₁ ¹⁾	E ₂ ¹⁾	F ₁ ¹⁾²⁾	F ₂ ¹⁾²⁾	F ₃ ¹⁾²⁾	F ₄ ¹⁾²⁾
	Metric	Metric	Metric	Metric	Metric	Metric	Metric	Metric	Metric	Metric	Metric	Metric	Metric	Metric	Metric	Metric
MULI® 1	10 x 21.5	12	Tr18 x 4	1605	29.6/48	M8	28	12	M5x10	32(45.25)	12/12	44/44	48/48	28/28	38/38	6/5.5
MULI® 2	14 x 25	15	Tr20 x 4	2005	38.7/61	M8	35	15	M6x12	35(49.5)	12/12	44/44	55/55	32/32	45/45	7/7
MULI® 3	16 x 42.5	20	Tr30 x 6	2505	46	M10	35	17	M8x12	44(62.2)	14/14	46/46	62/62	38/38	50/50	7/7
MULI® 4	20 x 45	25	Tr40 x 7	4005/4010	60	M12	52	25	M10x15	55(77.8)	16/16	73/59	95/80	63/53	78/68	7/9
MULI® 5	25 x 65	40	Tr55 x 9	5010	85	M20	52	28	M12x18	60(84.85)	18/18	97/97	110/110	72/72	90/90	11/11
JUMBO® 1	25 x 62.5	45	Tr60 x 9	---	90	M24	52	28	M12x18	60(84.85)	20	99	125	85	105	11
JUMBO® 2	30 x 65	55	Tr70 x 10	---	105	M30	58	32	M12x18	(80)	30	100	180	95	140	17
JUMBO® 3	30 x 65	60	Tr80 x 10	8010	120	M30	58	32	M12x18	(80)	30/22	110/101	190/145	105/105	150/125	17/14
JUMBO® 4	35 x 62.5	80	Tr100 x 10	---	145	M36	72	40	M16x30	(100)	35	130	240	130	185	25
JUMBO® 5	48 x 97.5	95	Tr120 x 14	---	170	M42	80	50	M16x40	(115)	40	160	300	160	230	28

1) The first values in the table apply to the trapezoidal screw nut EFM. For dimension 4010 the first values in the table are valid.

2) The second values in the table apply to the ball screw nut KGF.

3) Diameter and length to shoulder.

4) Dimension A1 in accordance with DIN 1685 GTB 18.