

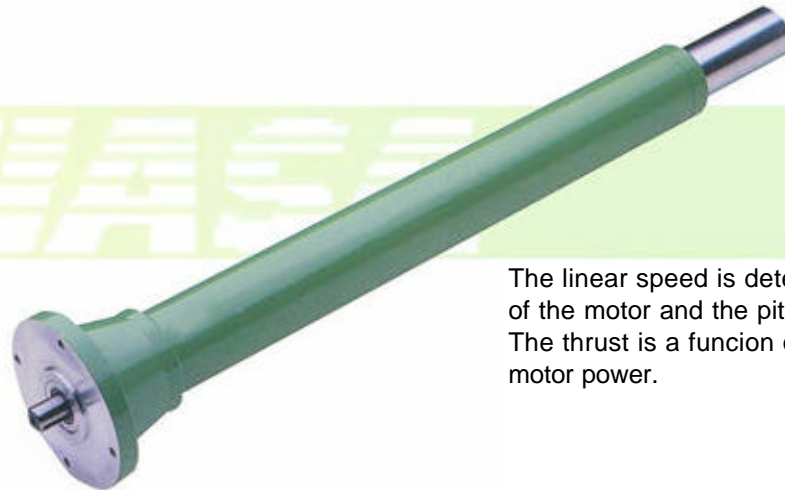
VersaRam MECHANICAL LINEAR ACTUATORS

Model M100

M100 BASIC MODEL ACTUATOR

The basic model actuator has been designed to easily attach several types of drives, i.e. manual, electrical, mechanical, etc.

It is possible to attach several actuators in parallel using right angled gearboxes and a single motor.



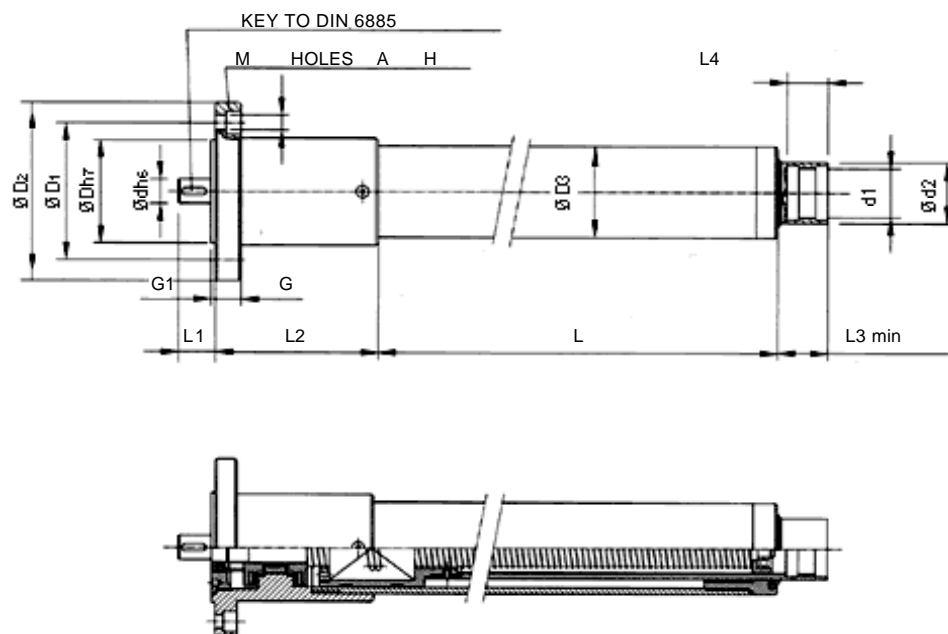
M100

The linear speed is determined by the RPM of the motor and the pitch of the screw.
The thrust is a function of screw pitch and motor power.

Ref. NIASA	Screw Ø x pitch	Ød	Ød ₁	Ød ₂	Ød ₃	ØD	ØD ₁	ØD ₂	ØD ₃
M100-F15-KGT5	12x5	9	M22x2	25	7	48	56	75	30
M100-F15-Tr4	16x4	9	M22x2	25	7	48	56	75	30
M100-F20-KGT5	20x5	12	M27x2	35	9	72	84	110	55
M100-F20-KGT20	20x20	12	M27x2	35	9	72	84	110	55
M100-F20-Tr5	24x5	12	M27x2	35	9	72	84	110	55
M100-F30-KGT5	32x5	20	M42x2	50	11	90	106	130	75
M100-F30-KGT10	32x10	20	M42x2	50	11	90	106	130	75
M100-F30-KGT40	32x40	20	M42x2	50	11	90	106	130	75
M100-F30-Tr6	36x6	20	M42x2	50	11	90	106	130	75
M100-F40-KGT10	40x10	25	M60x2	70	11	110	130	150	90
M100-F40-KGT20	40x20	25	M60x2	70	11	110	130	150	90
M100-F40-KGT40	40x40	25	M60x2	70	11	110	130	150	90
M100-F40-Tr8	45x8	25	M60x2	70	11	110	130	150	90
M100-F50-KGT10	50x10	35	M80x2	90	13	200	225	250	150
M100-F50-KGT20	50x20	35	M80x2	90	13	200	225	250	150
M100-F50-Tr9	55x9	35	M80x2	90	13	200	225	250	150

VERSARam MECHANICAL LINEAR ACTUATORS

Model M100



	H	M	G	G1	L	Standard strokes	L1	L2	L3	L4	load N
M100-F15-KGT5	90	4	12	2	45+Stroke	100, 200, 300	15	61	21	20	0-2000
M100-F15-Tr4	90	4	12	2	45+Stroke	100, 200, 300	15	61	21	20	0-2000
M100-F20-KGT5	90	4	15	2	65+Stroke	250, 500, 750, 1000	20	100	16	25	0-5000
M100-F20-KGT20	90	4	15	2	65+Stroke	250, 500, 750, 1000	20	100	16	25	0-5000
M100-F20-Tr5	90	4	15	2	65+Stroke	250, 500, 750, 1000	20	100	16	25	0-5000
M100-F30-KGT5	90	4	18	3	82+Stroke	250, 500, 750, 1000	30	130	17	30	0-10000
M100-F30-KGT10	90	4	18	3	82+Stroke	250, 500, 750, 1000	30	130	17	30	0-10000
M100-F30-KGT40	90	4	18	3	82+Stroke	250, 500, 750, 1000	30	130	17	30	0-10000
M100-F30-Tr6	90	4	18	3	82+Stroke	250, 500, 750, 1000	30	130	17	30	0-10000
M100-F40-KGT10	60	6	20	4	115+Stroke	500, 1000, 1500	50	150	48	35	0-25000
M100-F40-KGT20	60	6	20	4	115+Stroke	500, 1000, 1500	50	150	48	35	0-25000
M100-F40-KGT20	60	6	20	4	115+Stroke	500, 1000, 1500	50	150	48	35	0-25000
M100-F40-Tr8	60	6	20	4	115+Stroke	500, 1000, 1500	50	150	48	35	0-25000
M100-F50-KGT10	60	6	25	5	220+Stroke	500, 1000, 1500	65	300	75	40	0-75000
M100-F50-KGT20	60	6	25	5	220+Stroke	500, 1000, 1500	65	300	75	40	0-75000
M100-F50-Tr9	60	6	25	5	220+Stroke	500, 1000, 1500	65	300	75	40	0-75000

VersaRam ELECTROMECHANICAL LINEAR ACTUATORS

M501 MODEL

M501 ACTUATOR WITH MOTOR MOUNT AND PARALLEL ANGLED BELT DRIVE

This actuator has been designed for loads ranging between 0 and 30,000 N and speeds between 115 and 920 mm/second. It is fitted with a motor mount and a toothed belt drive in a variety of ratios.



COMPONENTS OF THE ACTUATOR

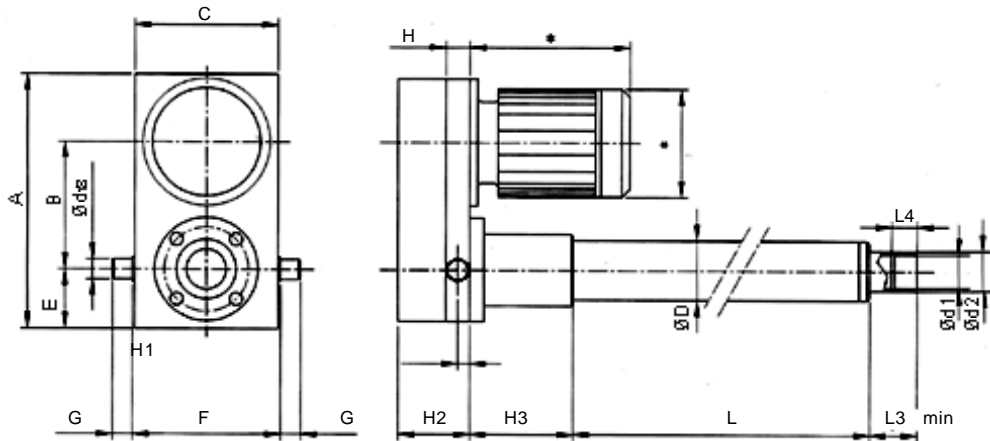
- **Actuator:** Basic model.
- **Fixing:** Trunnion/clevis mount.
- **Driving:** Motor mount and a toothed belt drive.

Ref. NIASA	Screw Øx pitch	A	B	C	Ød	Ød ₁	Ød ₂	ØD	E	F	G	H	H ₁	H ₂	H ₃
M501-F20-...-KGT5	20x5	295	145	150	20	M27x2	35	55	65	156	20	25	12.5	70	100
M501-F20-...-KGT20	20x20	295	145	150	20	M27x2	35	55	65	156	20	25	12.5	70	100
M501-F20-...-Tr5	24x5	295	145	150	20	M27x2	35	55	65	156	20	25	12.5	70	100
M501-F30-KGT10...	32x10	320	160	180	25	M42x2	50	75	90	186	25	30	15	80	130
M501-F30-KGT40...	32x40	320	160	180	25	M42x2	50	75	90	186	25	30	15	80	130
M501-F30-...-Tr6	36x6	320	160	180	25	M42x2	50	75	90	186	25	30	15	80	130
M501-F40-KGT10	40x10	490	229	250	35	M60x2	70	90	135	260	35	40	20	134	150
M501-F40-KGT20	40x20	490	229	250	35	M60x2	70	90	135	260	35	40	20	134	150
M501-F40-KGT40	40x40	490	229	250	35	M60x2	70	90	135	260	35	40	20	134	150
M501-F40-Tr8	45x8	490	229	250	35	M60x2	70	90	135	260	35	40	20	134	150
M501-F50-KGT10	50x10	600	305.5	300	45	M80x2	90	150	135	310	45	50	25	182	300
M501-F50-KGT20	50x20	600	305.5	300	45	M80x2	90	150	135	310	45	50	25	182	300
M501-F50-Tr9	55x9	600	305.5	300	45	M80x2	90	150	135	310	45	50	25	182	300

VersaRam ELECTROMECHANICAL LINEAR ACTUATORS

M501 MODEL

*DEPENDANT ON THE MOTOR



	L	Standard stroke	Load capacity (N)	L3	L4	A.C. Voltage [V]	Power [Kw]	Speed (mm/s)	N1 (rpm) input	N2 (rpm) output
M501-F20-...-KGT5	65+Stroke	250,500,750,1000	0-4800	16	25	220/380	0.12-0.75	0-115	1500	0-1500
M501-F20-...-KGT20	65+Stroke	250,500,750,1000	0-1300	16	25	220/380	0.12-0.75	0-460	1500	0-1500
M501-F20-...-Tr5	65+Stroke	250,500,750,1000	0-1200	16	25	220/380	0.12-0.75	0-115	1500	0-1500
M501-F30-KGT10...	82+Stroke	250,500,750,1000	0-4500	17	30	220/380	0.18-1.5	0-230	1500	0-1500
M501-F30-KGT40...	82+Stroke	250,500,750,1000	0-1200	17	30	220/380	0.18-1.5	0-920	1500	0-1500
M501-F30-...-Tr6	82+Stroke	250,500,750,1000	0-2000	17	30	220/380	0.18-1.5	0-138	1500	0-1500
M501-F40-KGT10	115+Stroke	500,1000,1500	0-25000	48	35	220/380	0.37-7.2	0-230	1500	0-1500
M501-F40-KGT20	115+Stroke	500,1000,1500	0-15000	48	35	220/380	0.37-9	0-460	1500	0-1500
M501-F40-KGT40	115+Stroke	500,1000,1500	0-7000	48	35	220/380	0.37-9	0-920	1500	0-1500
M501-F40-Tr8	115+Stroke	500,1000,1500	0-9000	48	35	220/380	0.37-9	0-184	1500	0-1500
M501-F50-KGT10	220+Stroke	500,1000,1500	0-30000	75	40	220/380	0.55-9	0-230	1500	0-1500
M501-F50-KGT20	220+Stroke	500,1000,1500	0-15000	75	40	220/380	0.55-9	0-460	1500	0-1500
M501-F50-Tr9	220+Stroke	500,1000,1500	0-8000	75	40	220/380	0.55-9	0-207	1500	0-1500

VersaRam MECHANICAL LINEAR ACTUATORS MODEL M601

M601 ACTUATOR WITH MOTOR MOUNT AND RIGHT ANGLED GEAR DRIVE

The M601 actuator has been designed for loads up to 75,000N and speeds ranging from 1 and 1000 mm/sec.



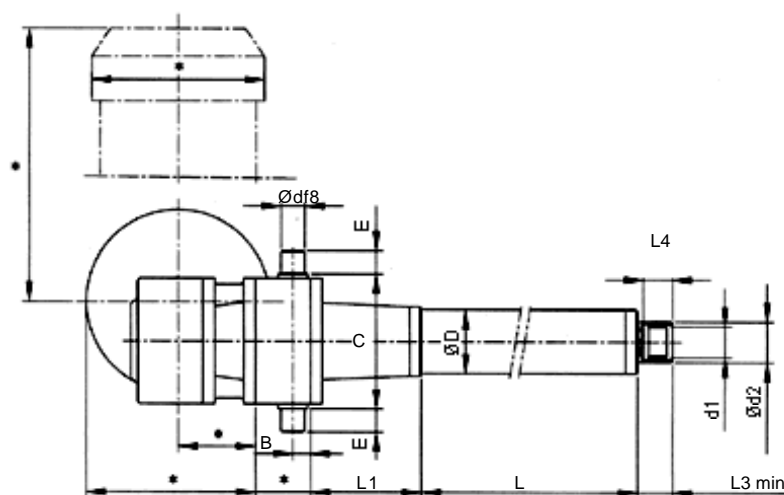
COMPONENTS OF THE ACTUATOR

- **Actuator:** Basic model.
- **Fixing:** Via motor housing.
- **Driving:** Bevel or worm gearboxes with wide range of gear ratios.

Ref. NIASA	Screw Øx Pitch	B	C	ØD	Ød	Ød ₁	Ød ₂	E	L
M601-F20-KGT5-...-C.A.	20x5	15	116	55	20	M27x2	35	20	65+Stroke
M601-F20-KGT20-...-C.A.	20x20	15	116	55	20	M27x2	35	20	65+Stroke
M601-F20-Tr5-...-C.A.	24x5	15	116	55	20	M27x2	35	20	65+Stroke
M601-F30-KGT10-...-C.A.	32x10	20	136	75	25	M42x2	50	25	82+Stroke
M601-F30-KGT40-...-C.A.	32x40	20	136	75	25	M42x2	50	25	82+Stroke
M601-F30-Tr6-...-C.A.	36x6	20	136	75	25	M42x2	50	25	82+Stroke
M601-F40-KGT10-...-C.A.	40x10	30	160	90	35	M60x2	70	35	115+Stroke
M601-F40-KGT20-...-C.A.	40x20	30	160	90	35	M60x2	70	35	115+Stroke
M601-F40-KGT40-...-C.A.	40x40	30	160	90	35	M60x2	70	35	115+Stroke
M601-F40-Tr8-...-C.A.	45x8	30	160	90	35	M60x2	70	35	115+Stroke
M601-F50-KGT10-...-C.A.	50x10	40	260	150	45	M80x2	90	45	220+Stroke
M601-F50-KGT20-...-C.A.	50x20	40	260	150	45	M80x2	90	45	220+Stroke
M601-F50-Tr9-...-C.A.	55x9	40	260	150	45	M80x2	90	45	220+Stroke

VersaRam MECHANICAL LINEAR ACTUATORS MODEL M601

* DEPENDANT ON REDUCTION RATIO



	Standard stroke	L1	L3	L4	Load capacity (N)	A.C. Voltage[V]	Power[Kw]	speed (mm/s)	N1 (rpm) Input	N2 (rpm) Output
M601-F20-KGT5-...-C.A.	250,500,750,1000	100	16	25	0-5000	220/380	0.18-0.37	3-45	1500	36-540
M601-F20-KGT20-...-C.A.	250,500,750,1000	100	16	25	0-5000	220/380	0.18-0.37	3-45	1500	9-135
M601-F20-Tr5-...-C.A.	250,500,750,1000	100	16	25	0-5000	220/380	0.18-0.37	3-45	1500	36-540
M601-F30-KGT10-...-C.A.	250,500,750,1000	130	17	30	0-10000	220/380	0.18-0.37	3-45	1500	18-270
M601-F30-KGT40-...-C.A.	250,500,750,1000	130	17	30	0-10000	220/380	0.18-0.37	3-45	1500	4-67
M601-F30-Tr6-...-C.A.	250,500,750,1000	130	17	30	0-10000	220/380	0.18-0.37	3-45	1500	30-450
M601-F40-KGT10-...-C.A.	500,1000,1500	150	48	35	0-25000	220/380	1.1-4	3-45	1500	18-270
M601-F40-KGT20-...-C.A.	500,1000,1500	150	48	35	0-25000	220/380	0.55-4	3-45	1500	9-135
M601-F40-KGT40-...-C.A.	500,1000,1500	150	48	35	0-25000	220/380	0.37-2.9	3-45	1500	4-68
M601-F40-Tr8-...-C.A.	500,1000,1500	150	48	35	0-25000	220/380	1.1-4	3-45	1500	22-337
M601-F50-KGT10-...-C.A.	500,1000,1500	300	75	40	0-75000	220/380	2.9-11	3-45	1500	18-270
M601-F50-KGT20-...-C.A.	500,1000,1500	300	75	40	0-75000	220/380	0.55-9.2	3-45	1500	9-135
M601-F50-Tr9-...-C.A.	500,1000,1500	300	75	40	0-75000	220/380	4-11	3-45	1500	20-300