

COVERED LINEAR TABLE MLC



The COVERED LINEAR TABLES, are translation units almost identical to the Standard Linear Tables. The main difference lies in the fact that these are equipped with a metal cover that protects the most sensitive components such as: the guides, the screws, the nuts, the linear bearings, etc.

This type of protection is more robust than the bellows used on the MLS range. The metal cover offers greater protection in an aggressive environment, where high temperature, metal particles or where debris from other processes such as welding may be a problem.

The second advantage is that the stroke is not reduced by the protecting cover because the carriage moves over the cover from one end of the table to the other.

As with the MLS tables, the MLC tables can be manually commanded or by using CNC. They are also equipped with high precision recirculating ball guides, and rolled or ground ball screws, also of high precision.

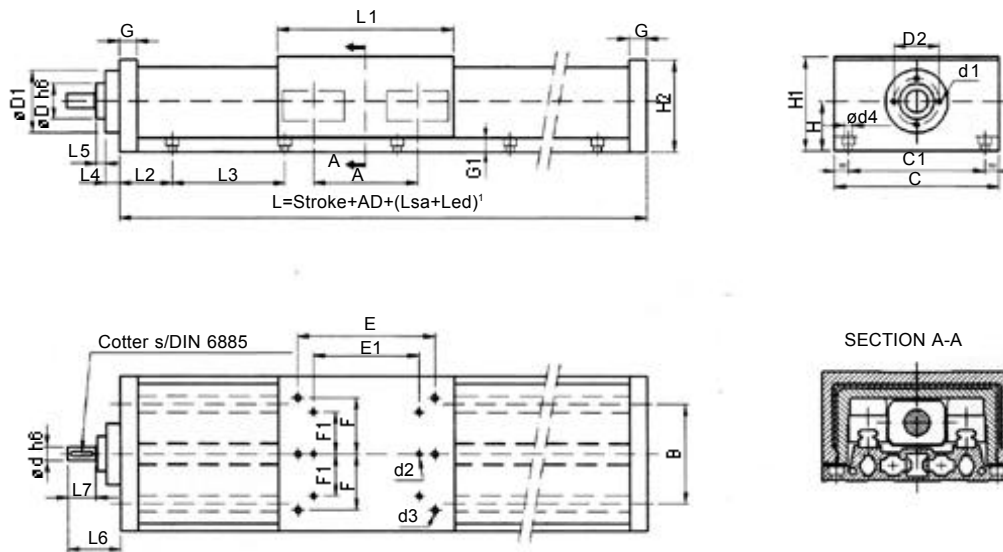
They can be assembled on one, two or three axis, and they are of great use in the mechanisation and multiple application devices.

DESIGN EXAMPLE

Linear standard table MLC, Size 1020, Double nut, Screw pitch 5 mm, Stroke 1000 mm, without SA supports, Total length 1300 mm, with motor mounting and coupling.

	MLC	1020	FM	5	1000	0 SA	1300	MGK
Covered linear table								
Size 1020 / 1532								
Nut Single = F Double = FM								
Pitch		1020: 5 / 20 / 50 1532: 5 / 10 / 20 / 40						
Stroke								
SA Supports								
Total length								
Motor mounting and coupling MGK								

COVERED LINEAR TABLE MLC



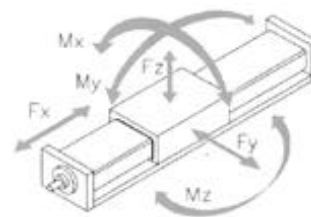
DIMENSIONS

Size	A	B	C	C1	d	d1	d2	d3	d4	D	D1	D2	E	E1	F	F1
1020	110	90	180	150	14	M8	-	M8	9	30	62	45	150	-	62	-
1532	145	122	235	200	20	M8	M8	M10	11	50	89	65	195	150	80	60

Size	G	G1	H	H1	H2	L1	L2	L3	L4	L5	L6	L7	AD
1020	20	14	54	104	100	220	30	120	15	10	52	25	300
1532	25	18	72	135	132	250	65	160	20	13	75	40	350

TECHNICAL DATA

Size	Fx N	Fy N	Fz N	Mx Nm	My Nm	Mz Nm
1020	2300	26000	29000	1300	1600	1400
1532	9000	38000	42800	2600	3100	2700



Size	Screw	Speed	Speeds	Accel.	Screw	Table's mass		Slide	Inertia	Position	Length ²
	Pitch mm	max. rpm	max. m/min	max. m/s ²	diameter mm	Stroke 0 kg	Each 100 kg				
1020	5,20,50	3000	150	10	20	19,1	1,4	11,8	8,8.10 ⁻⁵	±0,05	5600
3040	5,10,20,40	3000	120	10	40	53,5	3,1	31,8	6,4.10 ⁻⁴	±0,05	5600

¹Lsa: Supports (whenever the length requires).

²Led: Additional space, for micro switches etc.

²For other strokes please contact NIASA's technical department.