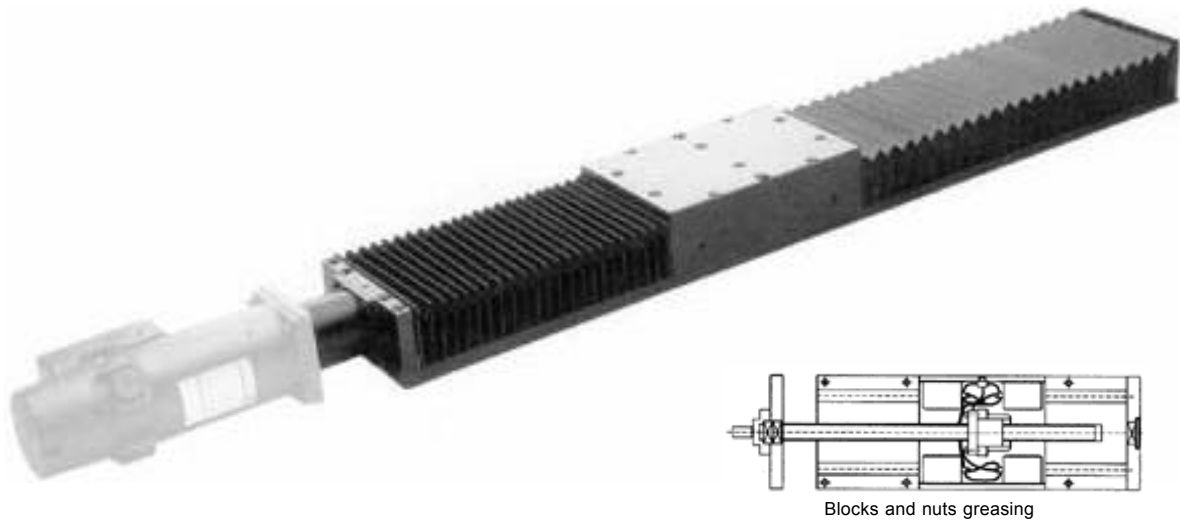


STANDARD LINEAR TABLES MLS



The standard linear table is the most popular of our tables, both in terms of production and versatility. It is a compact table, specially designed for heavy loads and to work on all axes as indicated in the introduction of the linear tables.

As a protection system against dust and other harmful elements that may interfere with its adequate functioning, it is possible to equip these tables with protecting bellows. Although these bellows do not hermetically seal the unit, they act as an important

barrier against contamination of the table. It is essential to remember that these bellows reduce the slide's useful stroke, and therefore this information will have to be provided to Precision Technology when ordering these tables.

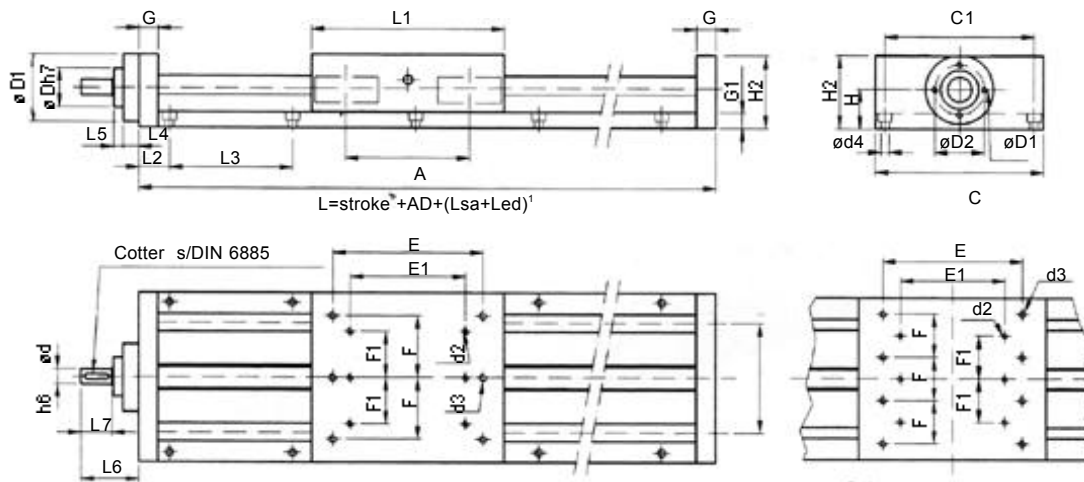
All tables equipped with ballscrews can be fitted with preloaded double nuts, to eliminate all free movement between the drive screw and the carriage.

DESIGN EXAMPLE

Linear Standard Table MLS, Size 1020, Double nut, Screw pitch 5 mm, Stroke 1000 mm, without supports, Total length 1300 mm, without protecting bellows, with motor mounting and coupling.

	MLS	1020	FM	5	1000	0 SA	1300	0	MGK
Linear Standard Table									
Size		1020 / 1532 / 3040							
Nut		Simple = F Doble = FM							
Picth		1020: 5 / 20 / 50 1532: 5 / 10/20/40 3040: 5 / 10/20/40							
Stroke									
Supports									
Total Length									
Bellows ²		With bellows: 1 Without bellows: 0							
Motor mounting and coupling									

STANDARD LINEAR TABLE MLS



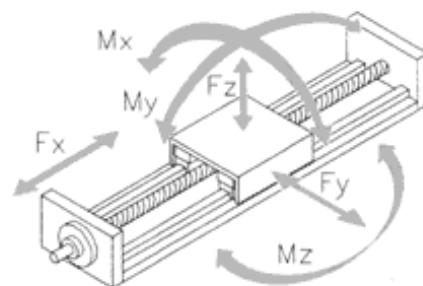
DIMENSIONS

Size	A	B	C	C1	d	d1	d2	d3	d4	D	D1	D2	E	E1	F	F1
1020	142	108	170	150	14	M8	-	M8	9	30	62	45	150	-	60	-
1532	161	142	220	195	20	M8	M8	M10	11	50	89	65	195	150	80	60
3040	229	200	300	260	25	M10	M10	M12	13	55	105	75	260	195	80	80

Size	G	G1	H	H1	H2	L1	L2	L3	L4	L5	L6	L7	AD
1020	20	15	35	68	66	220	30	120	15	10	52	25	300
1532	25	20	51	95	94	250	40	160	20	13	75	40	350
1532	30	25	60	113	112	350	50	160	20	13	85	50	450

TECHNICAL DATA

Size	Fx N	Fy N	Fz N	Mx Nm	My Nm	Mz Nm
1020	2300	26000	29000	1500	2000	1700
1532	9000	38000	42800	3000	3400	3000
3040	18000	70000	79200	7900	9000	7900



Size	Screw Pitch mm	speed max. rpm	speed max. m/m in	Accel. max. m/s ²	Screw Diameter mm	Stroke 0 kg	Table's mass Each 100 kg	Slide kg	Inertia Screw kgm ² /m	Position Precision mm	Length ³ Max. mm
1020	5,20,50	3000	150	10	20	12,5	1,2	7	8,8.10 ⁻⁵	±0,05	5600
1532	5,10,20,40	3000	120	10	32	25	2,1	13	6,4.10 ⁻⁴	±0,05	5600
3040	5,10,20,40	3000	120	10	40	67	4,4	37	1,6.10 ⁻³	±0,05	5600

¹ Lsa: Supports (whenever the length requires).

² Led : Additional space, for micro switches, etc.

³ The bellws reduce the useful stroke.

³ For other strokes please contact NIASA's technical department.