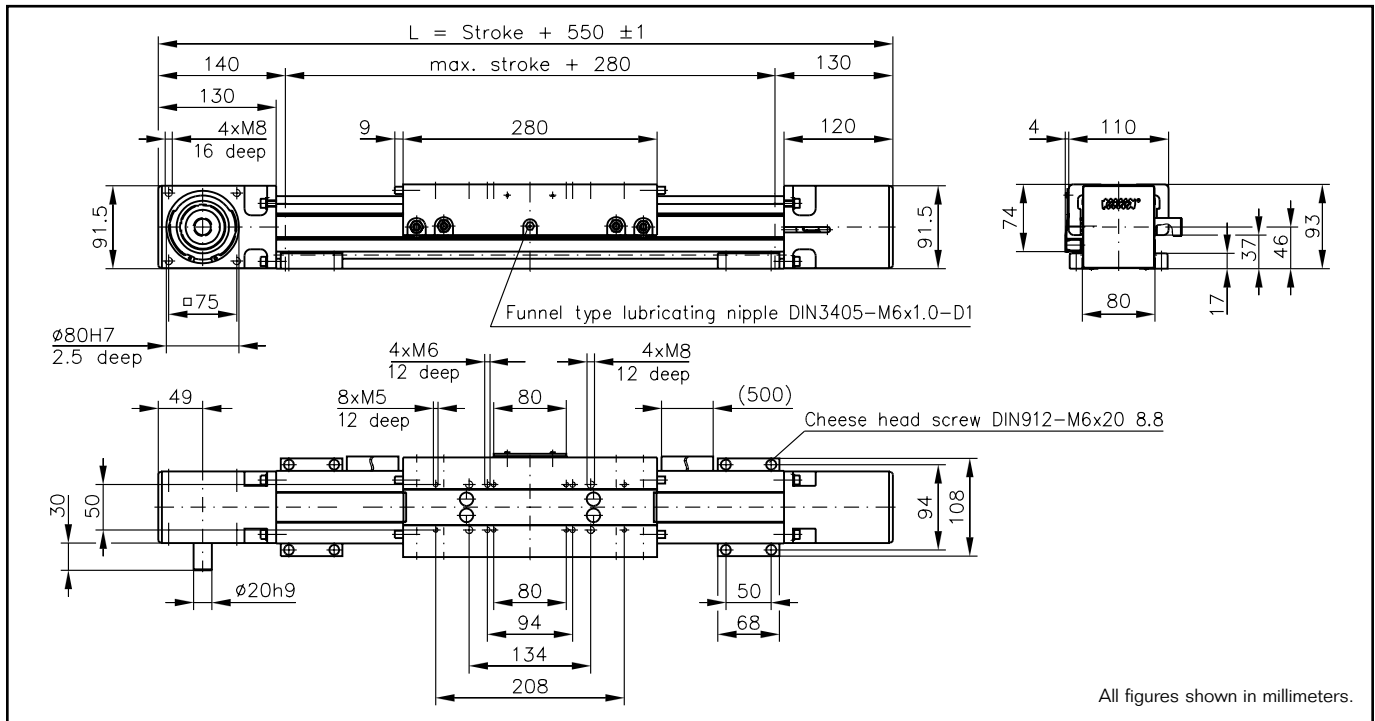


WIESEL™ SPEEDLine® WH80

with roller guideway and AT toothed belt



All figures shown in millimeters.

Note: Mounted wipers on request. The use of a long power bridge increases the total length.

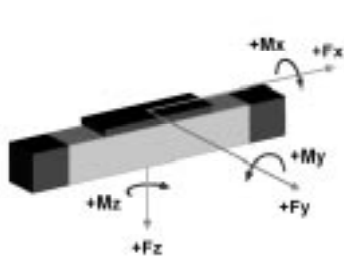
Technical data

Linear speed:max. 10 m/s
 Repeatability:± 0.05 mm
 Acceleration:max. 40 m/s²
 Drive element:Toothed belt 32ATL10
 Diameter:63.66 mm
 Stroke per revolution:200 mm
 Stroke length:up to 11000 mm
 Length of power bridge:280 or 450 mm
 see page 28
 Geometrical moment of inertia:ly 1.93 x 10⁶ mm⁴
 lz 1.80 x 10⁶ mm⁴

Weights

Basic unit with zero stroke:8.63 kg
 100 mm stroke:0.93 kg
 Power bridge with carriage:2.75 kg
 Provided:4 pieces KAO mounting brackets

Loads and load moments



Load	dynam. [N]
Fx drive ¹⁾	max. 2700
Fy	882
±Fz	2100
Load moment	dynam. [Nm]
Mx	75
My ²⁾	230
Mz ²⁾	100

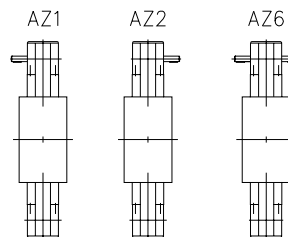
1) Depending on the speed, see respective chart.
 2) Increase of the admissible values by the use of a long power bridge or additional free-sliding power bridge (pages 28 and 29).

Idle torques [Nm]

Rotational speed [rpm]	M _{idle} [Nm]
150	2.4
1500	3.5
3000	5.0

Execution of drive shafts

(Detailed description see pg 99)
 Other executions on request.



Unit conversions

Length:
 1 m=1000 mm=39.37 inches
 1 inch=25.4 mm

Force:
 1 N=0.225 lbf
 1 lbf=4.45 N

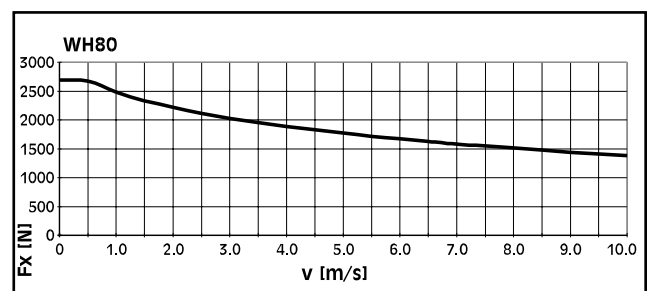
Moment of Force:
 1 Nm=0.738 lb · ft=8.85 lb · inches
 1 lb · ft=1.36 Nm

Geometrical moment of inertia:
 1 m⁴=10¹² mm⁴=2.4025 x 10⁶ in⁴

Mass moment of inertia:
 1 kg · m²=10⁴ kg · cm²=0.738 lb · ft · s²

Mass:
 1 kg=2.2 lb

Fx depending on the linear speed



Note: For tube lengths of 5400 mm and over, the tubular profile is composed of two parts. The joint must be adequately supported. It may be possible to position the joint according to customer's wishes.