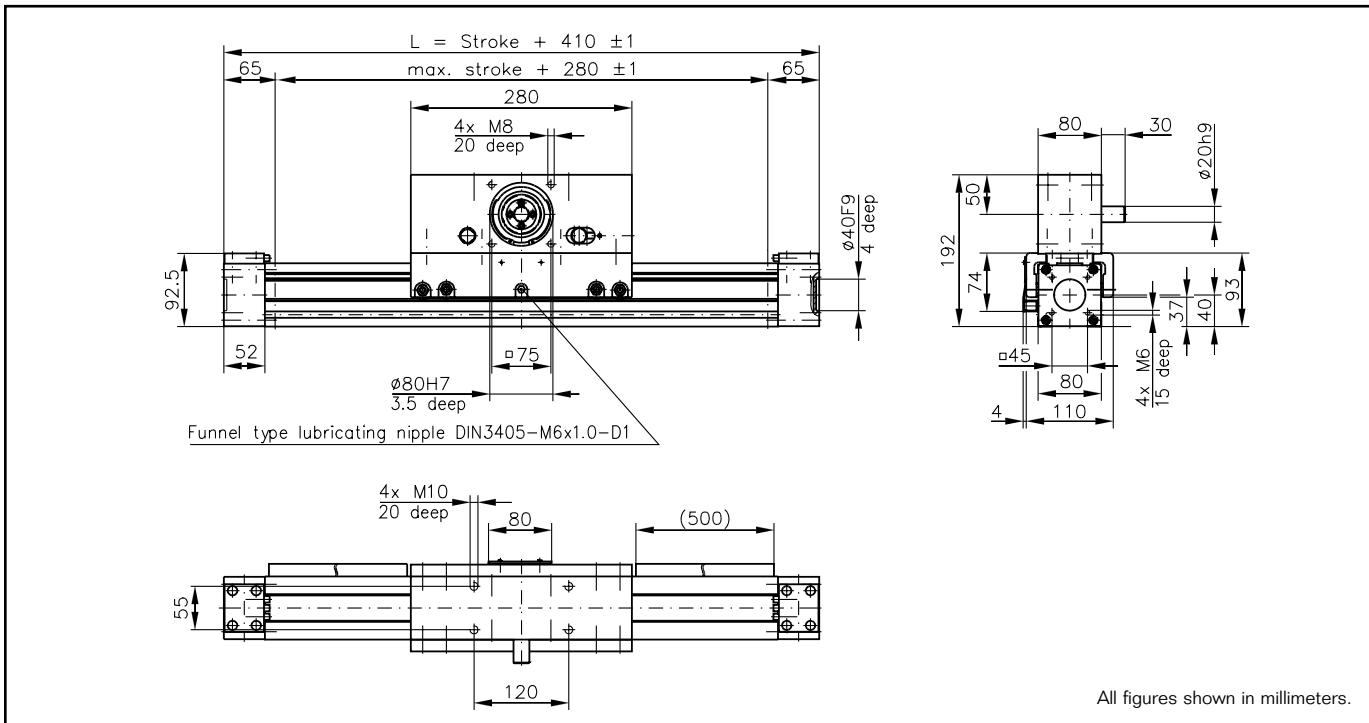


WIESEL™ SPEEDLine® WHZ80

with roller guideway and AT toothed belt



Note: Mounted wipers on request. The use of a long power bridge increases the total length.

Technical data

Linear speed:max. 10 m/s
 Repeatability:± 0.05 mm
 Acceleration:max. 40 m/s²
 Drive element:Toothed belt 32ATL5
 Diameter:63.66 mm
 Stroke per revolution:200 mm
 Stroke length:up to 3000 mm
 Length of power bridge:280 or 450 mm
 see page 28
 Geometrical moment of inertia: ..ly 1.93 x 10⁶ mm⁴
 lz 1.80 x 10⁶ mm⁴

Weights

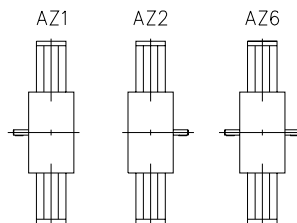
Basic unit with zero stroke:11.20 kg
 100 mm stroke:0.91 kg
 Power bridge with carriage:6.65 kg

Idle torques [Nm]

| Rotational speed [rpm] | M _{idle} [Nm] |
|------------------------|------------------------|
| 150 | 2.4 |
| 1500 | 3.5 |
| 3000 | 5.0 |

Execution of drive shafts

(Detailed description see pg 99)
 Other executions on request.



Unit conversions

Length:

1 m=1000 mm=39.37 inches
 1 inch=25.4 mm

Force:

1 N=0.225 lbf
 1 lbf=4.45 N

Moment of Force:

1 Nm=0.738 lb · ft=8.85 lb · inches
 1 lb · ft=1.36 Nm

Geometrical moment of inertia:

1 m⁴=10¹² mm⁴=2.4025 x 10⁸ in⁴

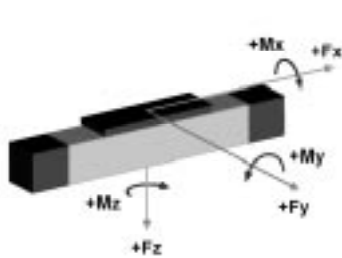
Mass moment of inertia:

1 kg · m²=10⁴ kg · cm²=0.738 lb · ft · s²

Mass:

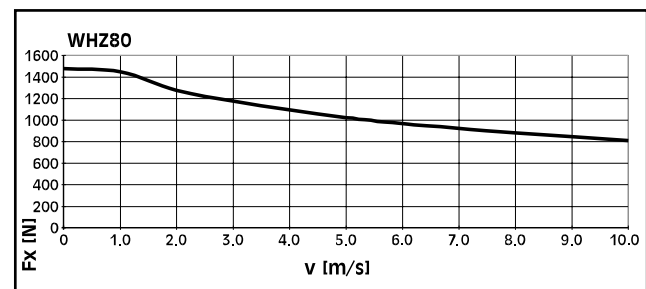
1 kg=2.2 lb

Loads and load moments



| Load | dynam. [N] |
|------------------------|-------------|
| Fx drive ¹⁾ | max. 1480 |
| Fy | 882 |
| ±Fz | 2100 |
| Load moment | dynam. [Nm] |
| Mx | 75 |
| My ²⁾ | 230 |
| Mz ²⁾ | 100 |

Fx depending on the linear speed



1) Depending on the speed, see respective chart.