

## SPECIFIC MODELS

### M501 ACTUATOR WITH RIGHT ANGLED BELT DRIVE FOR PARALLEL MOTOR MOUNT

This actuator has been designed for medium loads and a wide range of speeds.

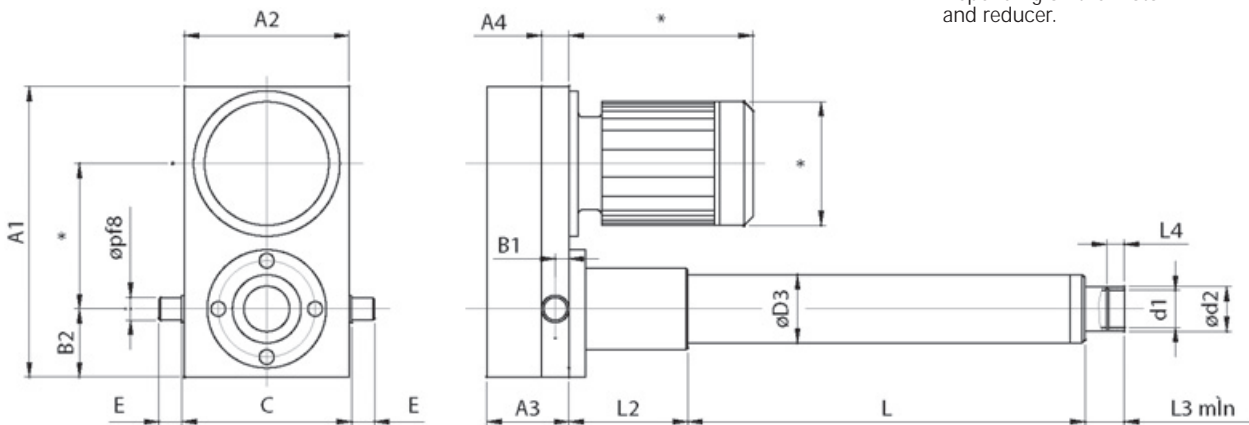
It needs to be mounted with a motor or motor gearbox combination and a toothed belt drive. A braked motor can be supplied if needed.

Components of the actuator

- Actuator: Basic model.
- Fixing: Trunnion / clevis mount.
- Driving: Any kind of motor and toothed belt drive.
- Braked motor (optional).



\*Depending on the motor and reducer.



#### Technical features

Model	Screw-pitch	ø	Load kN	Model	Screw-pitch	ø	Load kN	Model	Screw-pitch	ø	Load kN	Model	Screw-pitch	ø	Load kN
M501-F16	KGT 5	16	1,8	M501-F30	KGT 5	32	9	M501-F40	KGT 10	40	25	M501-F50	KGT 10	50	30
	Tr 4	16	1		KGT 10	32	4,5		KGT 20	40	15		KGT 20	50	15
M501-F20	KGT 5	20	5		KGT 40	32	1,2		KGT 40	40	7		Tr 9	60	8
	Tr 5	24	1,2		Tr 6	36	2		Tr 7	44	10				

#### Dimensions

Model	d <sub>1</sub>	d <sub>2</sub>	D <sub>3</sub>	L	Standard strokes	L <sub>2</sub>	L <sub>3</sub>	L <sub>4</sub>	A <sub>1</sub>	A <sub>2</sub>	A <sub>3</sub>	A <sub>4</sub>	B <sub>1</sub>	B <sub>2</sub>	C	E	p
M501-F16	M26 x 1,5	32	40	45 + Stroke	100, 200, 300, 400	61	21	20	245	130	70	20	10	50	138	18	12
M501-F20	M27 x 2	35	55	65 + Stroke	100, 200, 300, 500	100	16	25	300	150	85	25	12,5	65	160	20	20
M501-F30	M42 x 2	50	75	82 + Stroke	200, 400, 600, 1000	130	17	30	320	180	90	30	15	90	192	25	25
M501-F40	M60 x 2	70	90	115 + Stroke	250, 500, 750, 1000	150	48	35	490	250	135	40	20	135	270	35	35
M501-F50	M80 x 2	90	150	220 + Stroke	300, 600, 1000, 1500	300	75	40	600	300	182	50	25	135	320	45	45