

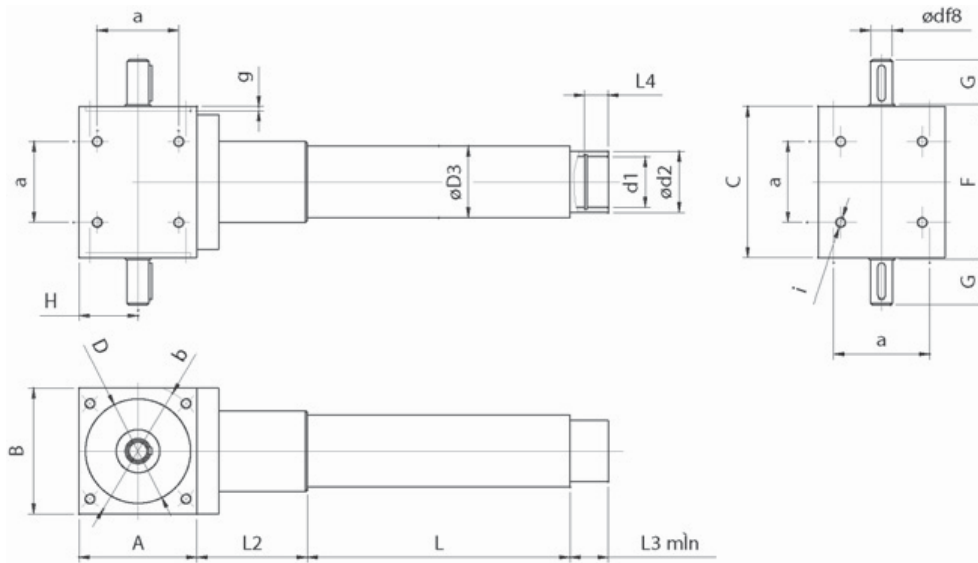
ELECTROMECHANICAL LINEAR ACTUATORS

SPECIFIC MODELS

M505 ACTUATOR WITH INTEGRATED RIGHT ANGLED BEVEL GEAR BOX

The M505 actuator has been designed for mounting several units in parallel and the drive to be at 90°.

*For sizes F40 & F50 get in touch with Precision Technology.



Technical features

Model	Screw-pitch	ø	Load kN	Model	Screw-pitch	ø	Load kN	Model	Screw-pitch	ø	Load kN
M505-F16	KGT 5	16	2,5	M505-F20	KGT 5	20	5	M505-F30	KGT 5	32	10
	Tr 4	16	2,5		KGT 20	20	5		KGT 10	32	15
			Tr 5		24	5	KGT 40		32	10	
						Tr 6	36		10		

Dimensions

Model	d	d ₁	d ₂	D ₃	L	Standard strokes	L ₂	L ₃	L ₄	A	B	C	D	F	G	H	a	b	g	i
M505-F16	14	M26 x 1,5	32	40	85 + Stroke	100, 200, 300, 400	61	21	20	65	70	84	58	86	25	32,5	45	75	2	M6 x 10
M505-F20	16	M27 x 2	35	55	105 + Stroke	100, 200, 300, 500	100	16	25	90	90	110	62	112	34	45	70	75	3	M10 x 18
M505-F30	19	M42 x 2	50	75	122 + Stroke	200, 400, 600, 1000	130	17	30	120	120	154	75	158	40	60	100	100	5	M10 x 18

NOTE: Effective November 2010, VERSARam Actuators have 40mm extra length, to provide a default over-travel safety of 20mm at each end of travel. Please consult the factory if you require a substitute or duplicate actuator to one purchased prior to that date.